

# Borrow A Bag Instructions with Box Corners:

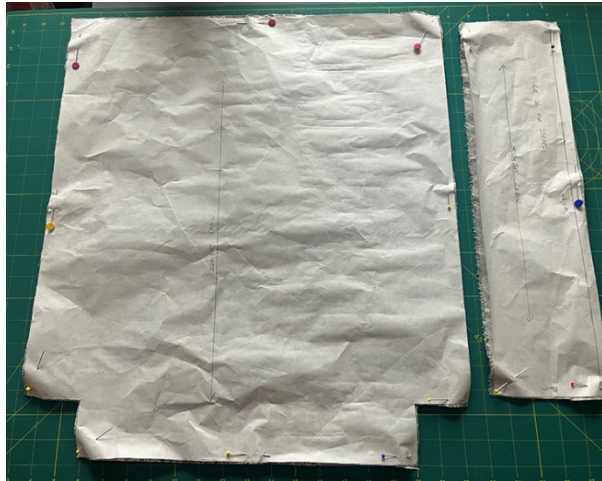
## Materials:

3/4 metre fabric, minimum 112 cm wide – if using thin fabric please ensure it is strong enough to carry shopping.

Matching Thread

NB. Please finish all sewing by using reverse stitching to make all stitching secure and strong and trim all ends threads close to the fabric.

## Method:



### Step One: Preparing the Fabric & Cutting Out

- Cut 2 pieces of fabric 54 cm long by 48 cm wide ensuring the pattern of the fabric is going in the same direction for both pieces and is cut on the straight grain with corners cut for box corners as per the pattern (6cm square).
- Cut 2 pieces of fabric 46cm x 12cm for straps along straight grain of fabric.

### Step Two: Side Seams

- With wrong sides facing towards one another, right sides facing out, pin body of bag together along long sides.
- Sew the 2 side seams 1 cm from long raw edges. Trim these seams to .75cm so no stray long threads will show through once the seams are completed. Press seams open.
- Turn bag to wrong side out with right sides facing one another.
- Sew 2 long side seams 1.5 cm from edge to form French Seams. This type of seam is used to give strength to the bag.



### Step Three: Bottom Seam

- Turn bag to right side out, wrong sides facing one another, and pin and sew bottom seam 1 cm in from raw edge.
- Repeat above steps to create a French Seam at the bottom of bag.



om Seam

Side Seam

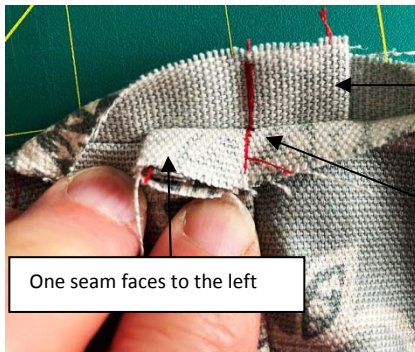
Bottom Seam





#### Step Four: Creating the box bottom

- With right sides of bag facing out, wrong sides facing into each other, fold the bottom seam against side seam and pin in place. \* see note below before sewing.



One seam faces to the right

Line up seams as you are pinning.

One seam faces to the left

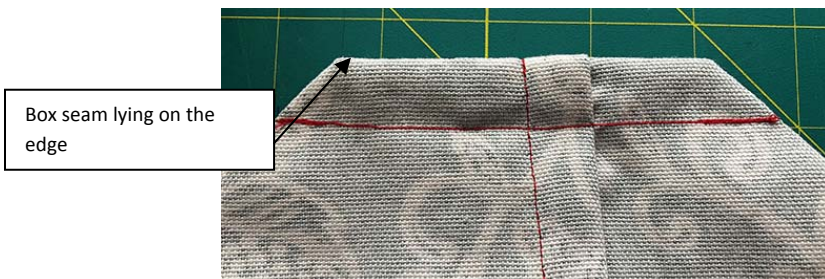
- Note: To avoid bulky seams lay the seams you are joining in different directions as shown. This needs to be done when pinning the corner, before sewing in place.



- Sew 1cm in from edge, across corner.



- Turn the bag inside out so wrong sides of fabric are facing out and right sides are facing together. At this point the box seam should look like this.



Box seam lying on the edge

- Fold the box seam so it lies on the edge, ensuring the side and bottom bag seams are aligned, stitch 1.5 cm from the edge across the box you have created, to form the finished box seam as shown.



- When you turn the bag to the right side your box corner should look like this.





### Step Five: Creating the Straps

- Take strap piece, fold in half lengthwise right sides out, wrong sides together and press.
- Open strap and fold raw edges into centre fold to form the strap, press. Your strap should now have four thicknesses of fabric.
- Sew along both long edges of strap close to the edge, through all layers of fabric.
- Repeat above to make other strap



### Step Six: Attaching Straps

- Pin first strap to top, raw edge of bag 9 cm from side seam as pictured, ensuring strap is not twisted.
- Stitch a 2 cm square from raw edge to secure strap to bag.
- Repeat three times to secure ends of each strap.



### Step Seven: Finishing Bag

- Turn raw top edge over 1 cm and press in place.
- Turn over a further 2.5 cm to enclose raw edge and press.
- Sew 2cm cm from folded top edge of bag and again 0.5 cm from top edge of bag.





### Step Eight: Attaching Label

Sew Sustainable Hatherleigh label onto one side of the bag, centering it between the handles and 3 cm from the top of the bag.